

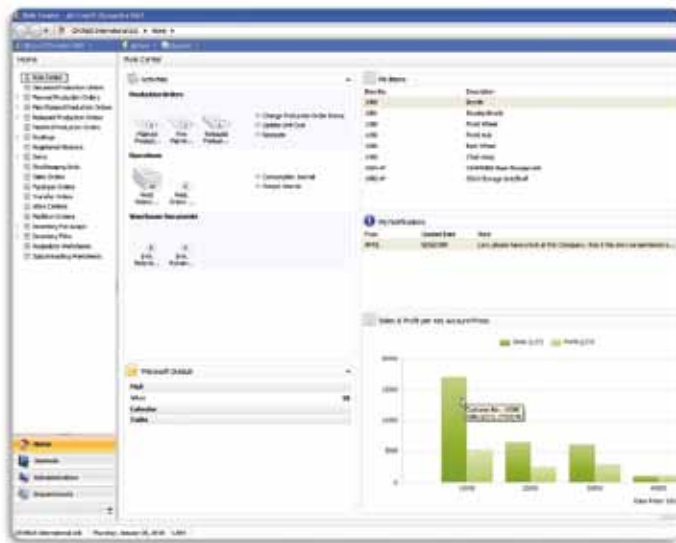


## Manufacturing in Microsoft Dynamics NAV 2009

### BENEFITS

- **Improve business performance from the shop floor to your bottom line.** Automate manufacturing processes and gain visibility into all aspects of operations, from order entry to production, warehouse management, and delivery.
- **Provide customers with information they can count on.** Increase the accuracy of promised orders and respond to customer queries about order status by viewing delivery details from your Role Center.
- **Adapt quickly to changing customer demands with agile manufacturing.** Plan rush orders, make exceptions, and handle last-minute changes to your manufacturing processes with multiple planning options, tracking, and interactive action messages.
- **Open your business to trading partners around the clock.** Using a Web browser, vendors can manage catalogs, enter drop shipment orders, and maintain delivery dates.

With Manufacturing in Microsoft Dynamics® NAV 2009, you can streamline manufacturing processes and adapt quickly to changing demands to give customers what they want, when they want it.



View current production order status, pick and putaway inventory lists, and KPIs, such as sales and profit margins.

Role Centers in Microsoft Dynamics NAV give you quick access to the data, reports, and tasks that are relevant to your job. Enhance operational efficiency and effectively manage production with quick access to production orders, bills of material (BOMs), supply planning, and capacity requirements planning. Take advantage of a simplified manufacturing foundation that includes rapid visibility into work in progress (WIP) data and support for order-by-order work flows. You can personalize your Role Center based on business needs and monitor critical business processes in a dashboard view.

You can also gain greater insight with powerful business intelligence capabilities that include a wide range of analytical and reporting tools. View key performance indicators (KPIs), such as comparing forecasted demand with sales, or use ad-hoc reporting to gain a real-time view of shop floor workloads and then share that data using Microsoft® Office Excel®. With the Report Designer in Microsoft Visual Studio®, you can quickly create intuitive reports to share with multiple teams.

## FEATURES

BE	<b>Role Centers</b>	<ul style="list-style-type: none"> <li>Production Planner, Shop Supervisor, Shop Supervision Manufacturing Foundation, Machine Operator</li> </ul>
	<b>Business intelligence</b>	<ul style="list-style-type: none"> <li>Make informed, confident decisions with graphical displays, online analytical processing (OLAP) cubes, and Web-based delivery options.</li> <li>Perform ad-hoc data analysis and export results using familiar tools such as Excel.</li> <li>Use the Report Designer in Visual Studio to create intuitive reports that are easy to share across multiple sites.</li> </ul>
ADVANCED MANAGEMENT	<b>Production management</b>	<ul style="list-style-type: none"> <li>Streamline made-to-order requests and simplify make-or-buy decisions.</li> <li>Modify components and operations as needed, even on released production orders.</li> <li>Plan product family orders that share the same routing for efficient build schedules.</li> </ul>
	<b>Graphical scheduling</b>	<ul style="list-style-type: none"> <li>Access an overview of production schedules displayed in Gantt charts and use drag-and-drop functionality to reschedule operations, with changes reflected in the relevant production order.</li> </ul>
	<b>Order promising</b>	<ul style="list-style-type: none"> <li>Promise orders with available-to-promise (ATP) and capable-to-promise (CTP).</li> </ul>
	<b>Manual planning</b>	<ul style="list-style-type: none"> <li>Simplify supply planning and make decisions on an order-by-order basis by using an alternative to printed production schedules that is designed for smaller businesses.</li> </ul>
	<b>Capacity planning</b>	<ul style="list-style-type: none"> <li>Implement realistic plans according to incoming resource capacity demands, and redefine order modifiers and reorder policies as needed.</li> <li>Accommodate changing shop floor workloads and simplify planning with calendars.</li> </ul>
	<b>Multiple costs</b>	<ul style="list-style-type: none"> <li>Manage alternative costs for resources and groups that are fixed or based on an additional percentage or fixed charge, with the ability to define multiple work types.</li> </ul>
	<b>Bills of material (BOMs)</b>	<ul style="list-style-type: none"> <li>Tightly integrate different types of BOMs and customized definitions into manufacturing operations to improve performance while supporting time-to-market and time-to-volume objectives.</li> <li>Create, track, and process multiple versions of BOMs and routings.</li> </ul>
ADVANCED MANAGEMENT+	<b>Cost budgeting</b>	<ul style="list-style-type: none"> <li>Understand item costs throughout the production process—including inventory, WIP, and cost of goods sold (COGS).</li> <li>Tighten control of closing processes, improve batch job costing, and streamline reconciliation with the general ledger.</li> </ul>
	<b>Exceptions handling</b>	<ul style="list-style-type: none"> <li>Make exceptions and last-minute changes to meet customer needs using action messaging, tracking, and multiple planning options.</li> </ul>
	<b>Supply planning</b>	<ul style="list-style-type: none"> <li>Plan from the sales order, production order, or purchase requisition, or use traditional master production schedule (MPS) or material requirements planning (MRP).</li> <li>Facilitate materials flow through the supply chain with multi-location planning.</li> <li>Update and change all materials, costs, and operations simultaneously.</li> </ul>
	<b>Demand forecasting</b>	<ul style="list-style-type: none"> <li>Analyze sales patterns from multiple perspectives.</li> <li>Compare forecasted demand with actual sales and consolidate and distribute demand plans with multiple stakeholders to increase collaborative planning.</li> </ul>
	<b>Machine center allocation</b>	<ul style="list-style-type: none"> <li>Allocate work and machine centers as capacities to streamline planning.</li> <li>Apply finite loading calculations to capacity-constrained resources to optimize machine centers and increase planning accuracy.</li> </ul>
	<b>Warehouse and inventory management</b>	<ul style="list-style-type: none"> <li>Integrate manufacturing and warehousing functionality to optimize warehouse layout and space utilization, and maintain up-to-date inventory information.</li> </ul>
	<b>Automated Data Capture System</b>	<ul style="list-style-type: none"> <li>Collect and use accurate inventory data in real time and increase the visibility of data throughout your business to improve warehouse efficiency.</li> </ul>

BE=Business Essentials

Features are organized by Business Ready Licensing edition. Actual editions may vary at the time of licensing. The Advanced Management edition includes all functionality of the Business Essentials edition and adds functionality to meet expanding business needs.

For more information about Manufacturing in Microsoft Dynamics NAV 2009, visit [www.microsoft.com/dynamics/nav](http://www.microsoft.com/dynamics/nav).

This document is for informational purposes only.

MICROSOFT MAKES NO WARRANTIES, EXPRESS, IMPLIED, OR STATUTORY, AS TO THE INFORMATION IN THIS DOCUMENT.

Published 06/2009

**Microsoft**